

# The Objective Lens

University Lowbrow Astronomers Monthly Newsletter Supplement

February 2024



From **ADRIAN BRADLEY**. This was a 4 min image for the sky, 4 mins for the ground. Lake Hudson Dark Sky Preserve. SQM-L was 20.6 average, and one reading was a 20.74.



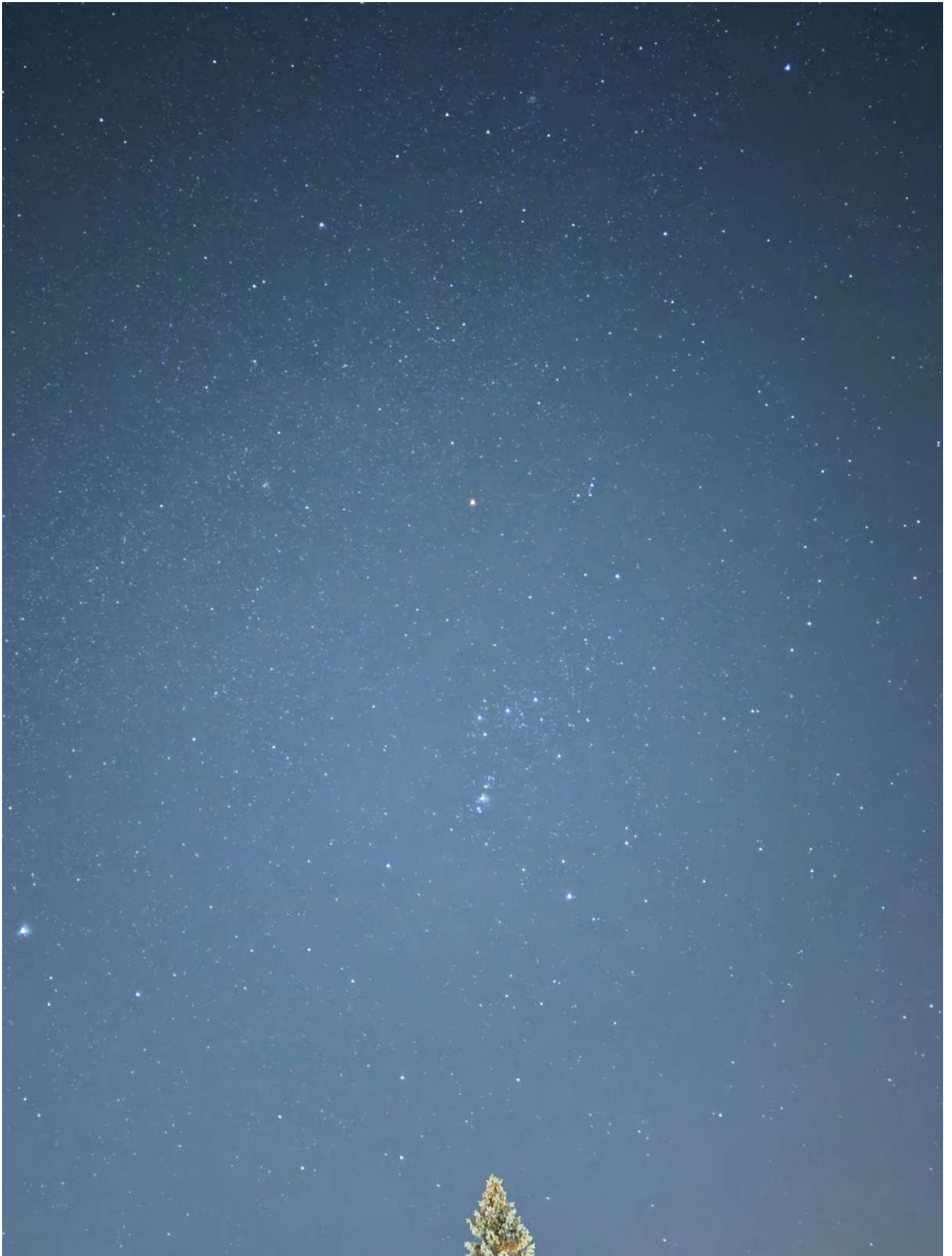
From **GARY NICHOLS**: I learned how to download the JWST data and have been using the Adam Block tutorials to learn how to manipulate the NIRCAM images. I have included my processing of the Cosmic Cliffs from the JWST data.



From **AJAY CHOUDHARY**: Orion Nebula



From **MATTHEW WEST**.



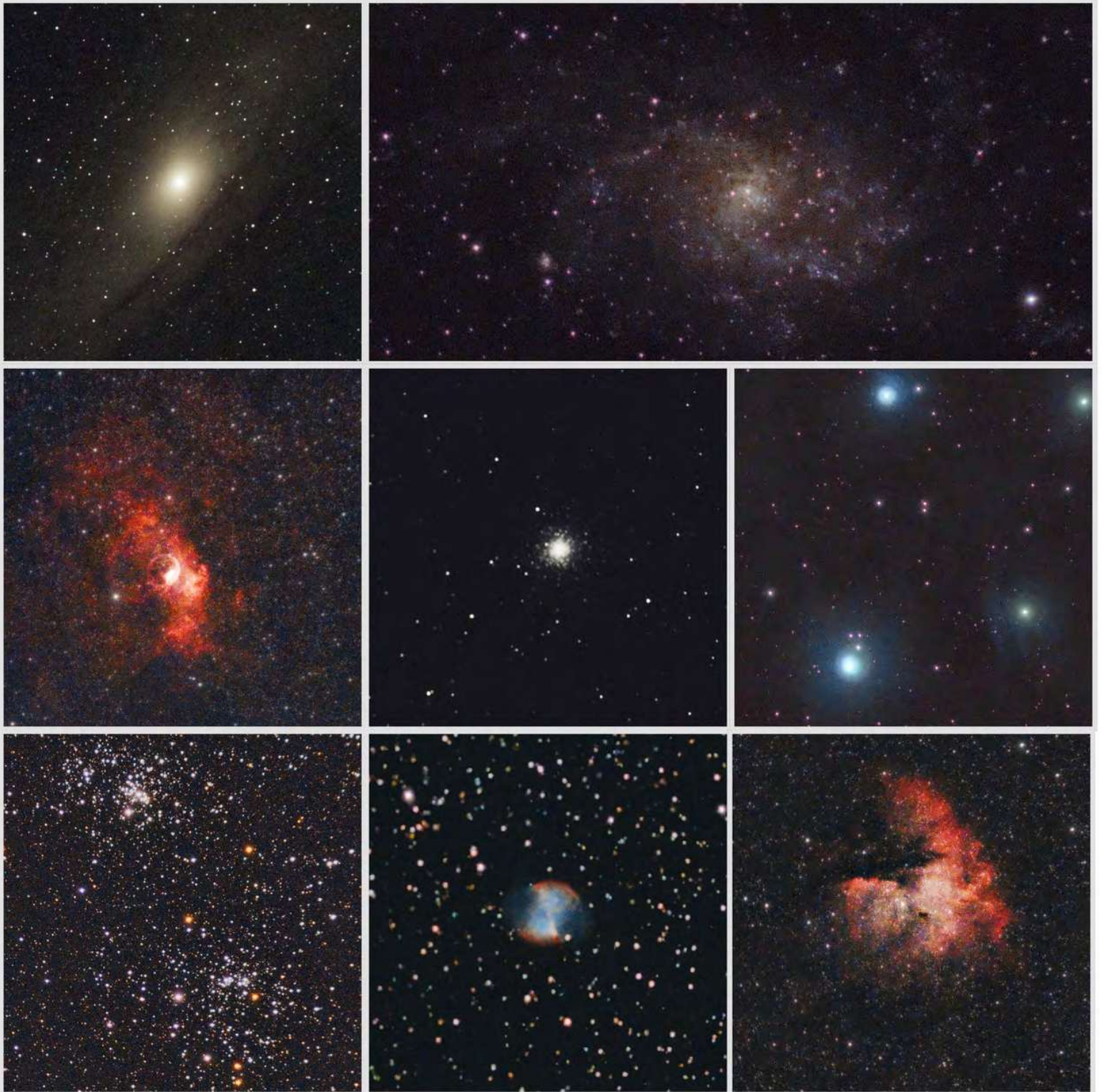
From **MATTHEW WEST**. Orion.



From **MATTHEW WEST**.



From **DORIAN JURGLE**: Several photos taken with the new Seestar.



From **DORIAN JURGLE**: Several photos taken with the new Seestar.





From **ADRIAN BRADLEY**. Outside of Saline, on US 12, heading west. SQM was around 19.80, I was surprised to get some of the Casseopeia side of the Milky Way.



From **ADRIAN BRADLEY**.



From **MATTHEW WEST**.



From **JACK SPRAGUE**. NGC 925 in Triangulum. 30 Mly distant. A member of the NGC 1023 group and presents a size of 10' x 6' at a magnitude of 10.5

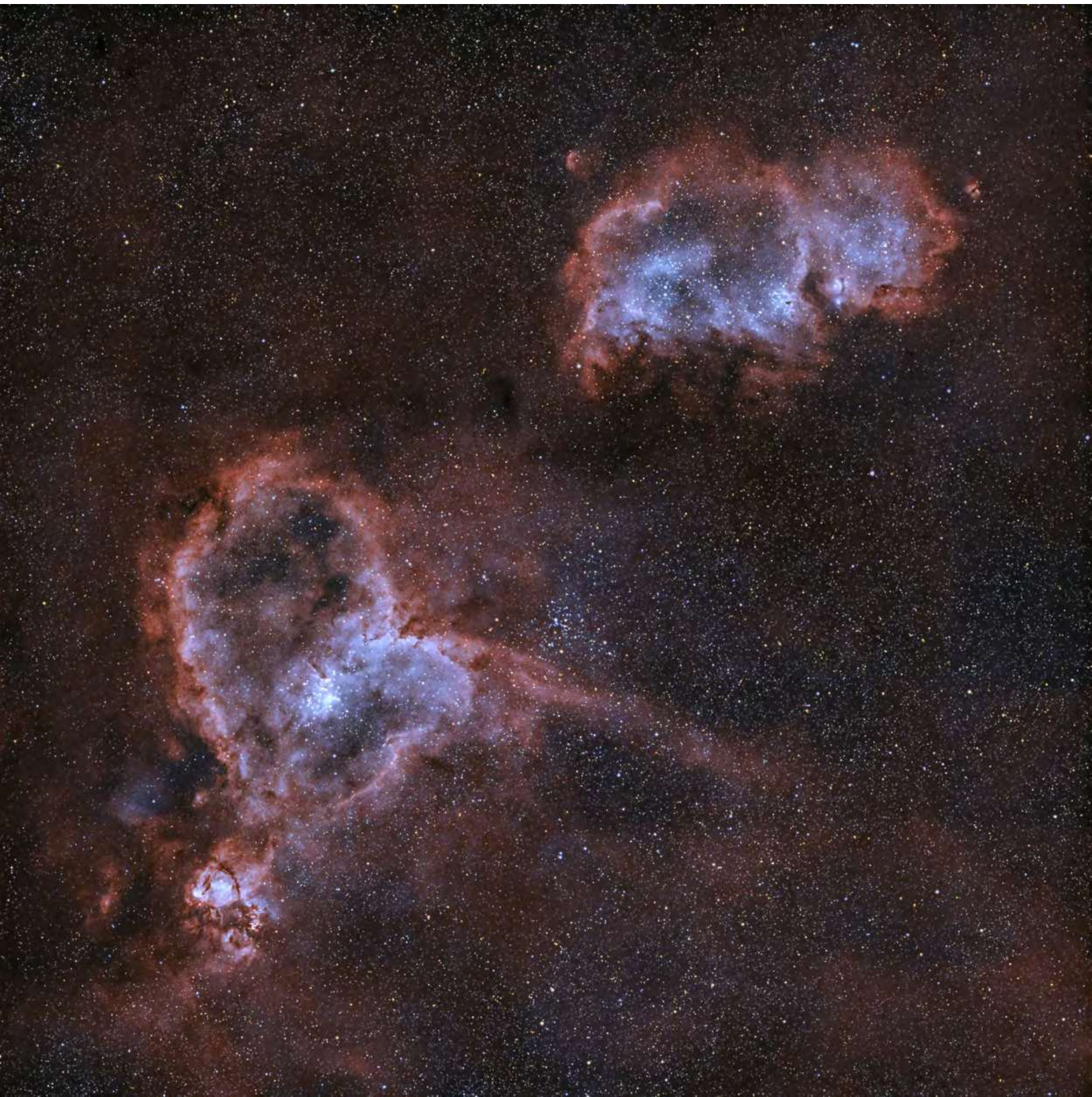
FIRST LIGHT IMAGE for a new ZWO 662 OSC low-noise camera. Acquired by an ES127 reduced to f5.6 @ 680mm in only 10 300s exposures for 50 minutes of total integration. Processed in Siril. Suffers from a lack of exposure time but I was dodging an incoming snow squall. Processed with dark, bias, and flats.



From **JACK SPRAGUE**. Arp 78 from 20231114. Also NGC 772 in Aries. 130 Mly distant. Acquired by an ZWO 183MC mounted to an ES127mm reduced to f5.6 @ 680mm in 50 240s exposures for 200 minutes of total integration. Processed in Siril with darks.



From **JACK SPRAGUE**. Caldwell 30 from 20230811 also NGC 7331 in Pegasus. Nearly 40 Mly distant. Acquired by an ZWO 183MC mounted to an ES127mm reduced to f5.6 @ 680mm in 50 180s exposures using an IR pass filter dropping all below 642nm in 50 180s exposures for a total integration of 150 minutes. Slightly over processed in Siril though I was happy with the color shift efforts pushing unseen IR wavelengths into the visible for the image. Meh. Seven other galaxies in frame: personal record!



From **AMY CANTU**. Heart and Soul Nebulas. ASI533MC Pro, 100 gain; 135mm Rokinon lens, f/3.2, 25 x 240 seconds. ZWO Mini guidescope, ASI120mm. 30 Darks, 20 flats, 20 dark flats. Pixinsight, Photoshop.