

The Objective Lens

University Lowbrow Astronomers Monthly Newsletter Supplement

July 2023

Skyscapes of Michigan



From **ADRIAN BRADLEY**. Lake Hudson Recreation Area.



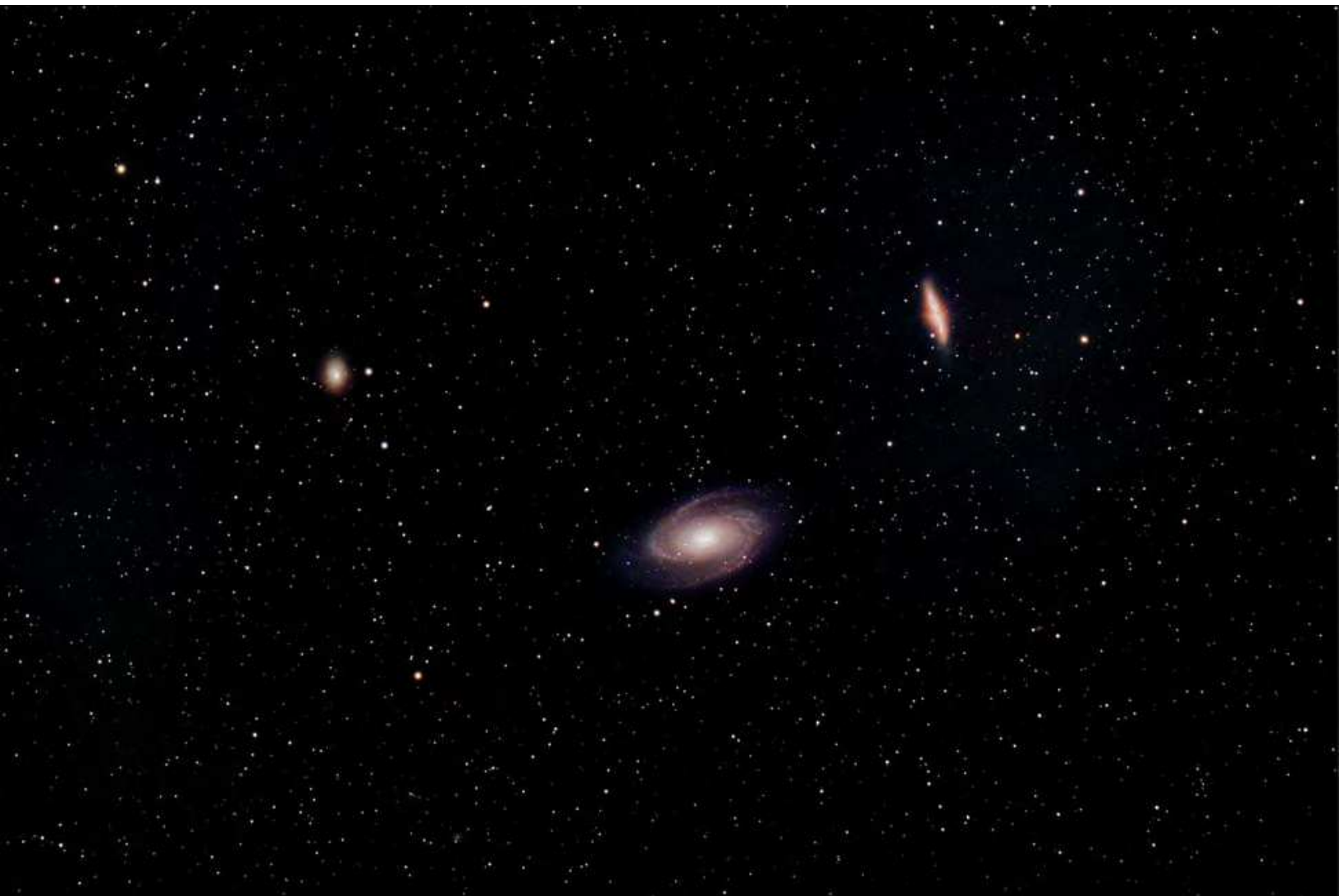
From **ADRIAN BRADLEY**. Lake Hudson Recreation Area.



From **ADRIAN BRADLEY**. Lake Hudson Recreation Area.



From **BRIAN OTTUM**. "I proved myself wrong. Always been saying 'gotta have a fast focal ratio telescope to get good deep sky images.' Well, here's a 10-minute exposure of M13 taken last weekend [early June] with Awni's old Sky-Explorer 7" f/15 Maksutov. That's about as "slow" a focal ratio as you can get. And under very light polluted skies."



From **BRIAN WAIT**. M81, M82, NGC 3077. Here is an image I captured a week ago at Pinckney Rec Area / Bruin Lake CG. Bright moonlight was an issue... :

I had to place the mount such that I could polar align through a notch in the trees, and also to maximize image capture with the targets eventually dropping down into another v-notch to the west.

(I should also mention that I accidentally used 2 L-Pro Filters - one in the camera (from the previous session), and one in the filter slider! - Anyone know what the effect of that is?)



From **DIPANKAR MAITRA**. With a Canon EOS60Da and a 200mm telephoto I could just about fit the Moon and Venus in the frame. See attached. Even though the focus is a bit soft, Venus's crescent could be seen when zooming into the image, as shown in the inset.



From **ADRIAN BRADLEY**: From Michigan's thumb region.



From **ADRIAN BRADLEY**: Tawas Point State Park



From **CHRIS SARNECKI**. Chisos Basin of Big Bend National Park

Handheld iPhone 14 phone on balcony railing.

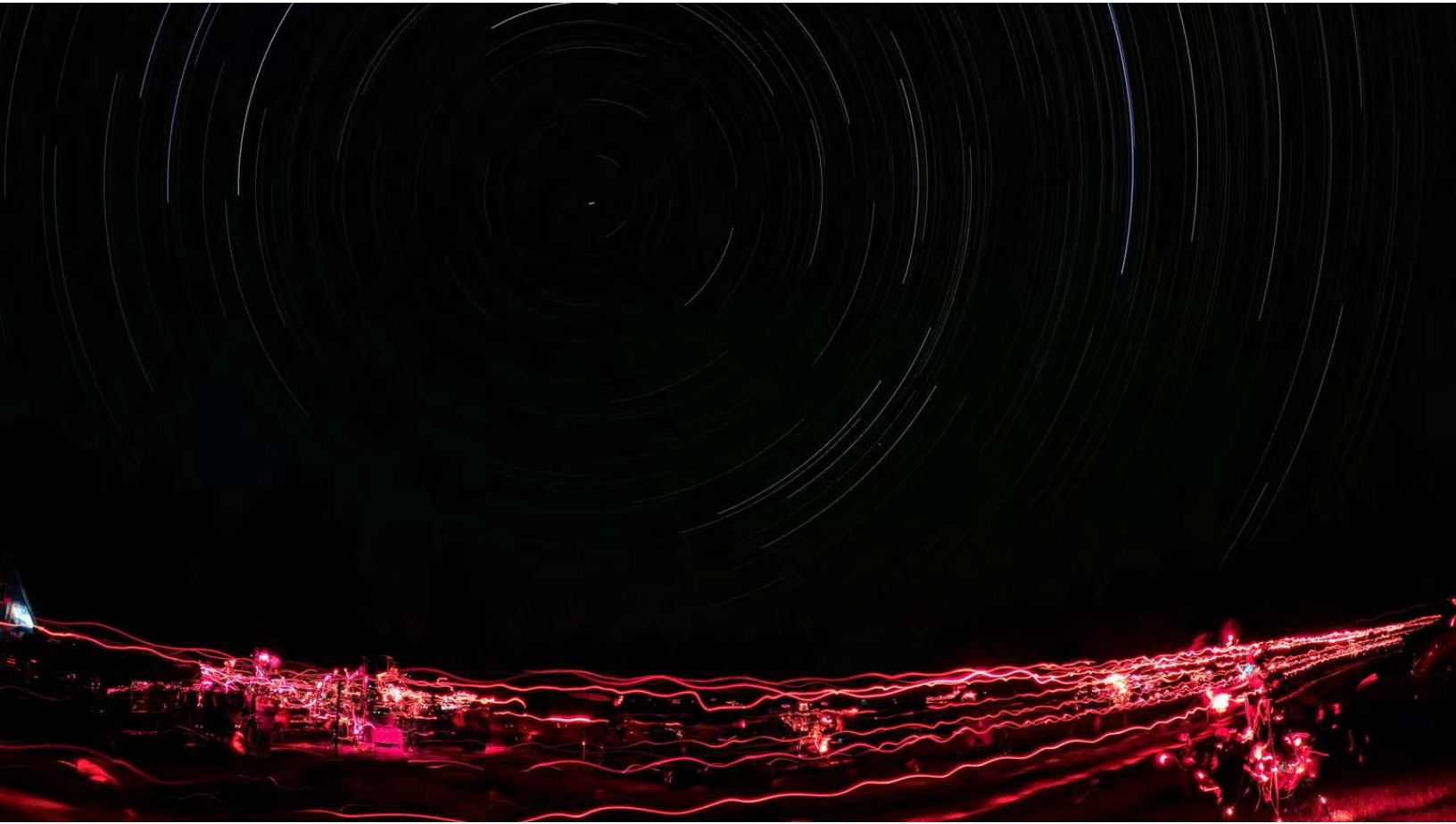
Exposure 3 seconds a determined by the software.

Non-edited

Helps to be shooting over northern Mexican Chihuahua desert. Nothing there. Nobody, no towns, nothing but javelinas (allegedly).



From **BRIAN WALKOWSKI**. Taken at the Cherry Springs Star Party.



From **BRIAN WALKOWSKI**. Taken at the Cherry Springs Star Party.



From **BRIAN WALKOWSKI**. Taken at the Cherry Springs Star Party.



From **ADRIAN BRADLEY**. Point Pelee National Park, ONT



From **ADRIAN BRADLEY**. Point Pelee National Park, ONT



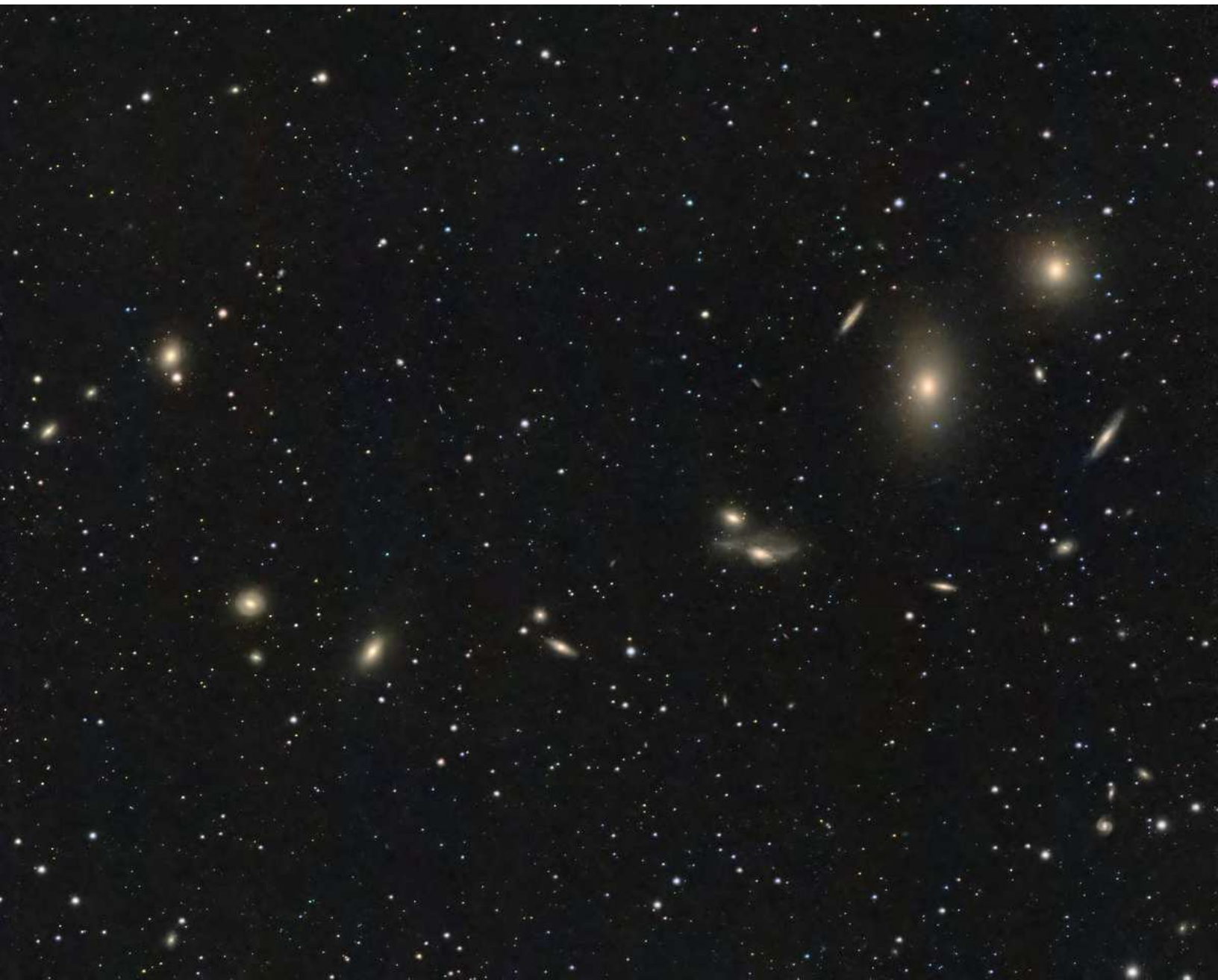
From **ADRIAN BRADLEY**. Point Pelee National Park, ONT



From **AMY CANTU**. More photos from the June 24 Open House at Peach Mountain and "On the Moon" event.

Brian Ottum's setup above. Brian presents to a group at right.





From **AMY CANTU**. Markarian's Chain. Taken with ASI183MC Pro and Redcat51.