

The Objective Lens

University Lowbrow Astronomers Monthly Newsletter Supplement

May 2023

Observing Partners



From **JACK SPRAGUE**. As I do AP primarily, I am up till o'dark-thirty even with automation and these two camp beside my library desk late into the evenings: Lou, the larger dark foxhound and Lillie, the beagle in the snug.



From **LARRY COATES**. Observing partners at the Exmouth Eclipse, Australia.

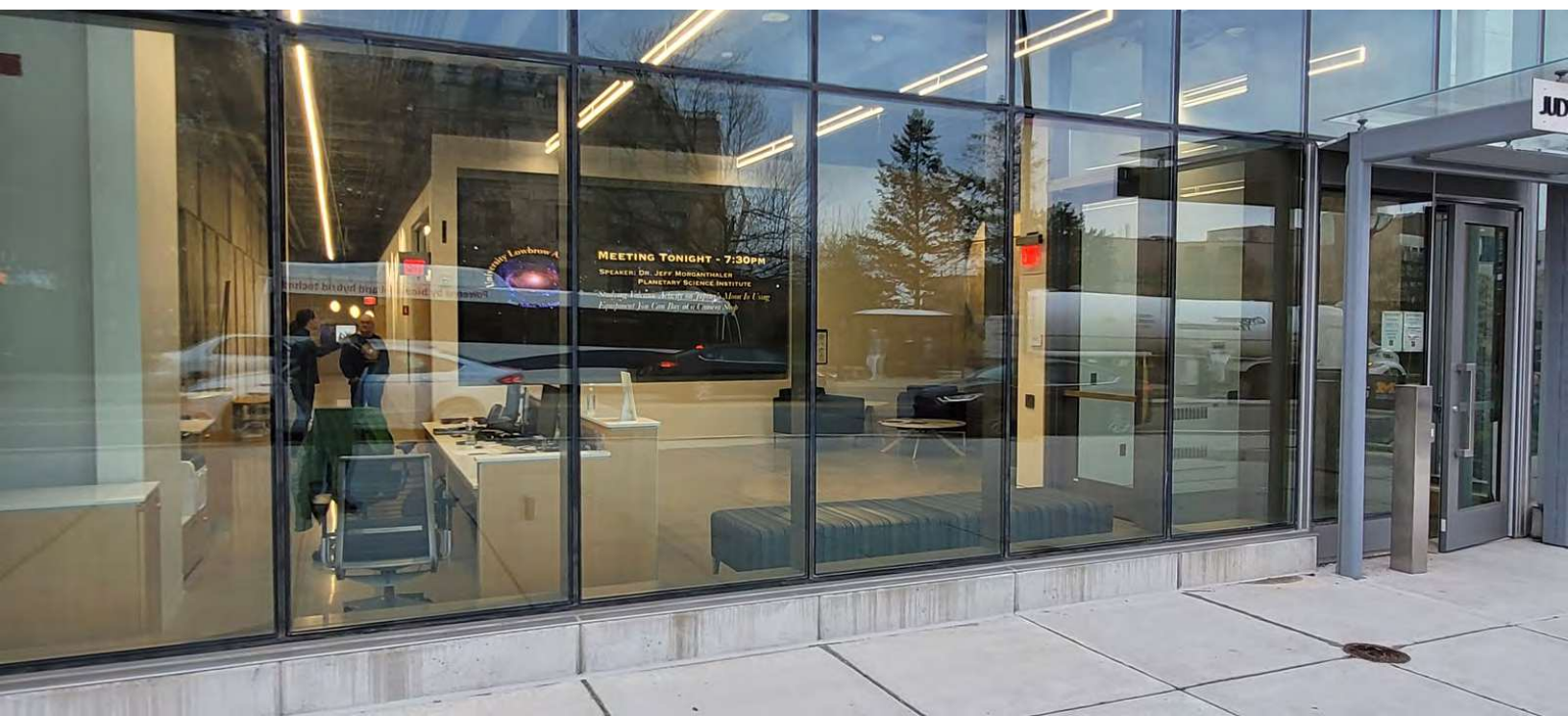


From **AMY CANTU**. Observing partners at the Big Moon Live event at the Ann Arbor District Library (above and below right). Presenter Brian Ottum, above. My son observing with me in my backyard, below left.





From **JEFF KOPMANIS**. Photos from the first meeting at the Detroit Observatory - our new (old) observing partner.





From **AMY CANTU**. Photos from our first meeting in the new space at the Detroit Observatory.





From **JACK SPRAGUE**. Fred Schebor, at December 2022's Artsy-Meaningless Slide Show.



From **JACK SPRAGUE**. From December 2022's Artsy-Meaningless Slide Show.



From **DONOVAN DREW**. Bode's and Cigar Galaxies.



From **JACK SPRAGUE**. M66.
680 mm reduced ES 127mm triplet.
4-11-2023 2 hrs integration ASI 462mc
darks, bias, lights
Processing in Siril.



From **JACK SPRAGUE**. M100.
680 mm reduced ES 127 mm triplet.
3-30-2023 160 min integration ASI 462mc
darks, bias, lights
Processing in Siril.



From **JACK SPRAGUE**. M65
680 mm reduced ES 127mm triplet.
4-11-2023 2hrs integration ASI 462mc
darks, bias, lights
Processing in Siril.



From **ADRIAN BRADLEY**. Port Austin.



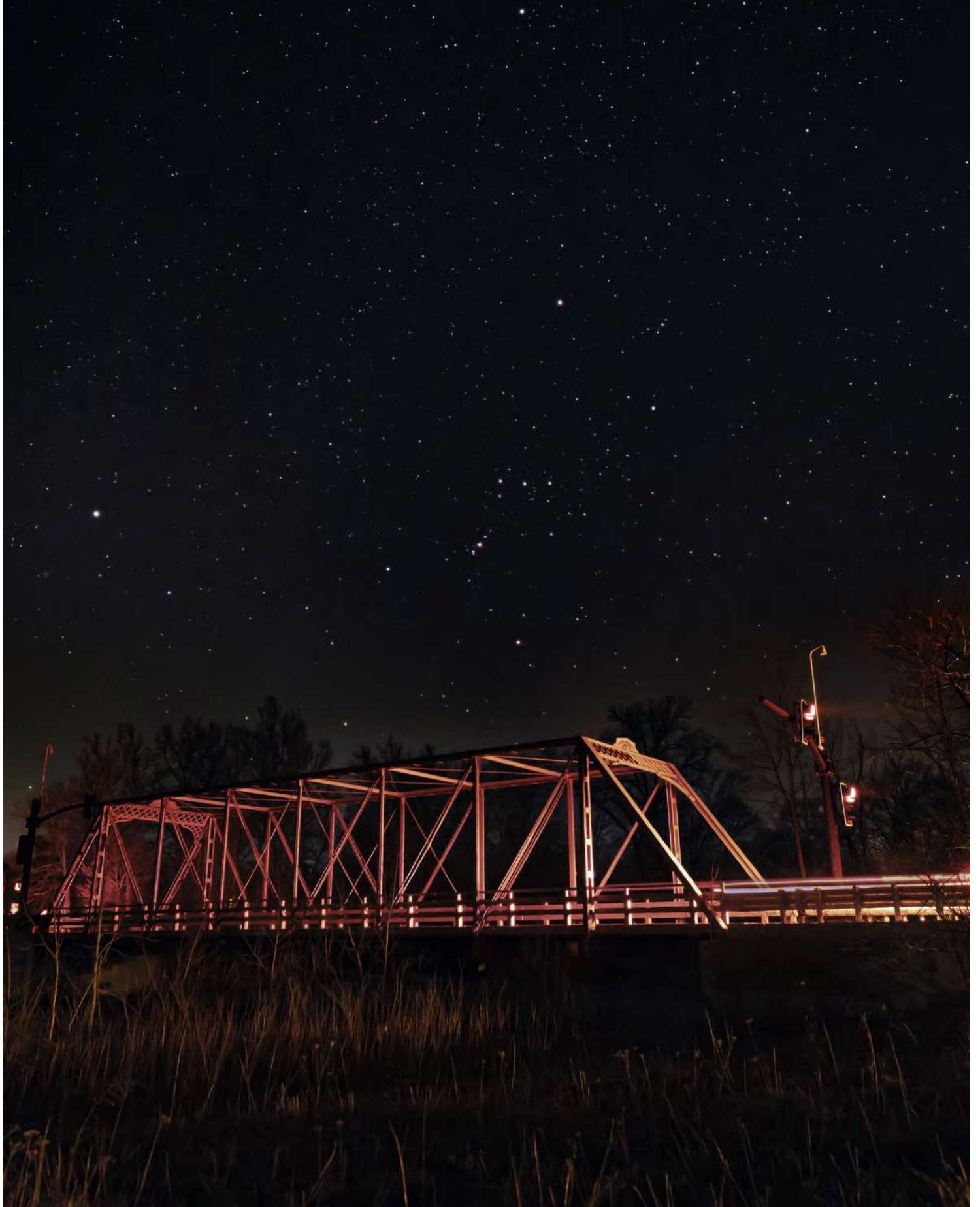
From **ADRIAN BRADLEY**. Little Sable Lighthouse



From **ADRIAN BRADLEY**. Port Austin.



From **ADRIAN BRADLEY**. Port Austin.



From **AMY CANTU**. Orion over East Delhi Bridge. (Thanks to my husband/favorite observing partner for driving across the bridge to illuminate it with the car's taillights.)



From **BRIAN WALKOWSKI**. M81 & M82. Been working my way through processing what I was able to capture during the good streak of weather around Easter. Looks Like i'll have plenty more processing time this week.

I'd like to share one of my better shots of M81 & M82.

Frames from 5 nights 4/8 through 4/13.

Bortle 6 area.

TeleVue Genisus 500mm F4

UNmodified Nikon D5300

All ISO 800 and 300s

150 frames captured.

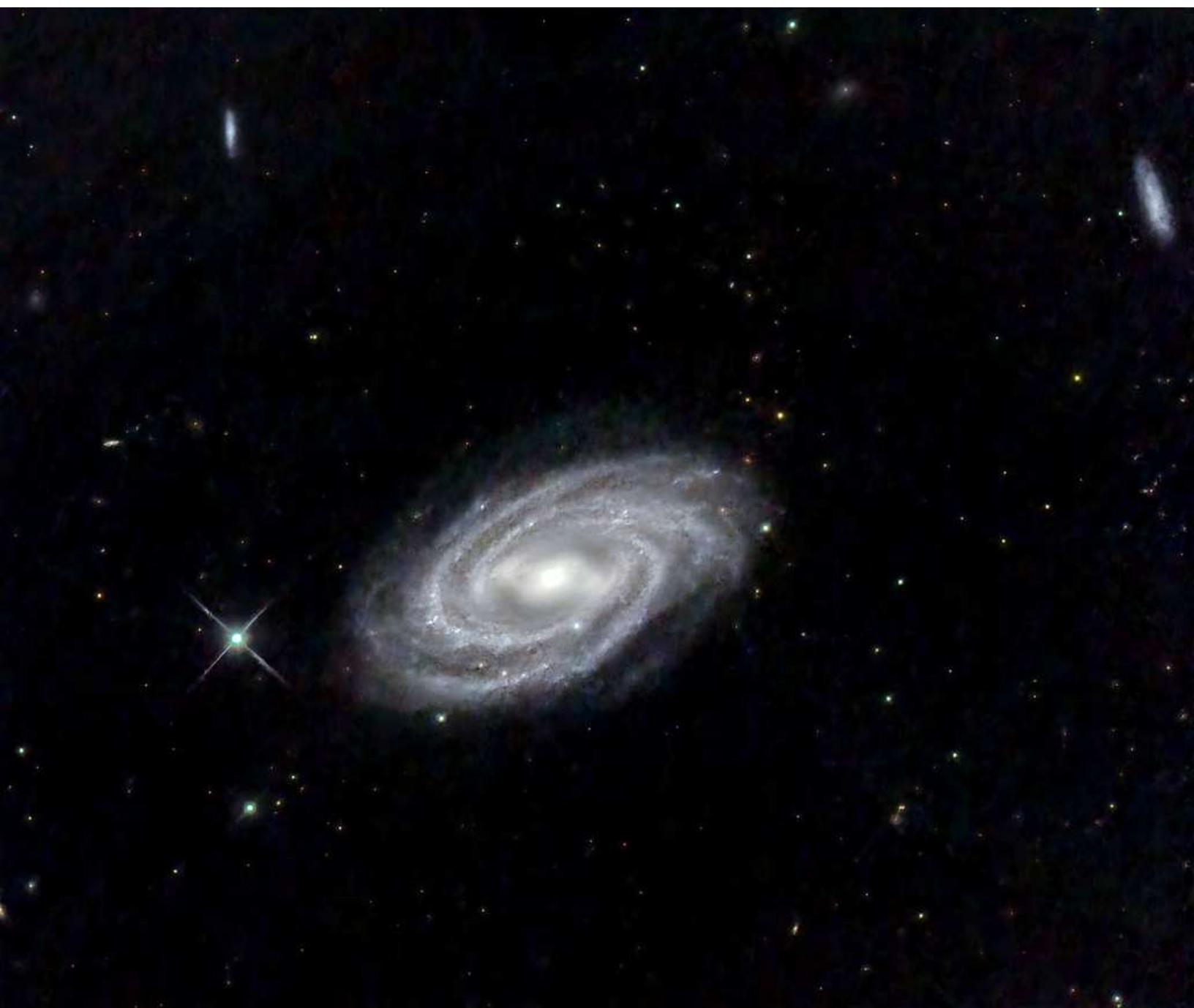
120 brought into pixInsight

30 frames each of Calibration frames

42 Frames failed Local Normalization (not sure what that was about)

66 frames were completed, stacked and cropped.

Post processed in Photoshop.



From **HOWARD RITTER**. M109. I got about 100 min on the big barred spiral M109 last night before the clouds rolled in here in the Bortle 6-7 Tampa Bay area, with CDK14, AP 1600 mount, ASI2600MC camera, 100 x 60s subs calibrated and stacked in ASISudio (quick & dirty), GxT'd, NxT'd, and BxT'd in PixInsight and stretched in Photoshop, all as a preliminary result while awaiting more data. When I've gotten 6 hrs or so of data and more familiarity with PI, I'll do the preprocessing and stacking again.

Still, for only 100 min under Bortle 6, I'm not disappointed. Quite a pretty subject.



From **DMITRI TSAHELNIK**.
These images of the Cigar
Galaxy (above) and the
Sombrero Galaxy (below)
were taken with a
cellphone through our
own McMath Telescope. (!)





From **BRIAN OTTUM**. Leo 1.

Technical Details:

ZWO ASI2600 Color CMOS camera

SharpStar 6" f/2.8 hyperbolic reflector

ZWO AM5 Mount

No filters, no guiding, no dithering

Bad Bortle 6 Saline backyard

Exposures 10-30sec, 20-60min total

Livestacked with SharpCap, Photoshop

tweaks



From **BRIAN OTTUM**. Leo Triplet.
Technical Details:
ZWO ASI2600 Color CMOS camera
SharpStar 6" f/2.8 hyperbolic reflector
ZWO AM5 Mount
No filters, no guiding, no dithering
Bad Bortle 6 Saline backyard
Exposures 10-30sec, 20-60min total
Livestacked with SharpCap, Photoshop tweaks



From **AMY CANTU**. Milky Way smoke from headlamp fire. With some of my favorite observing partners in Manistee National Forest.